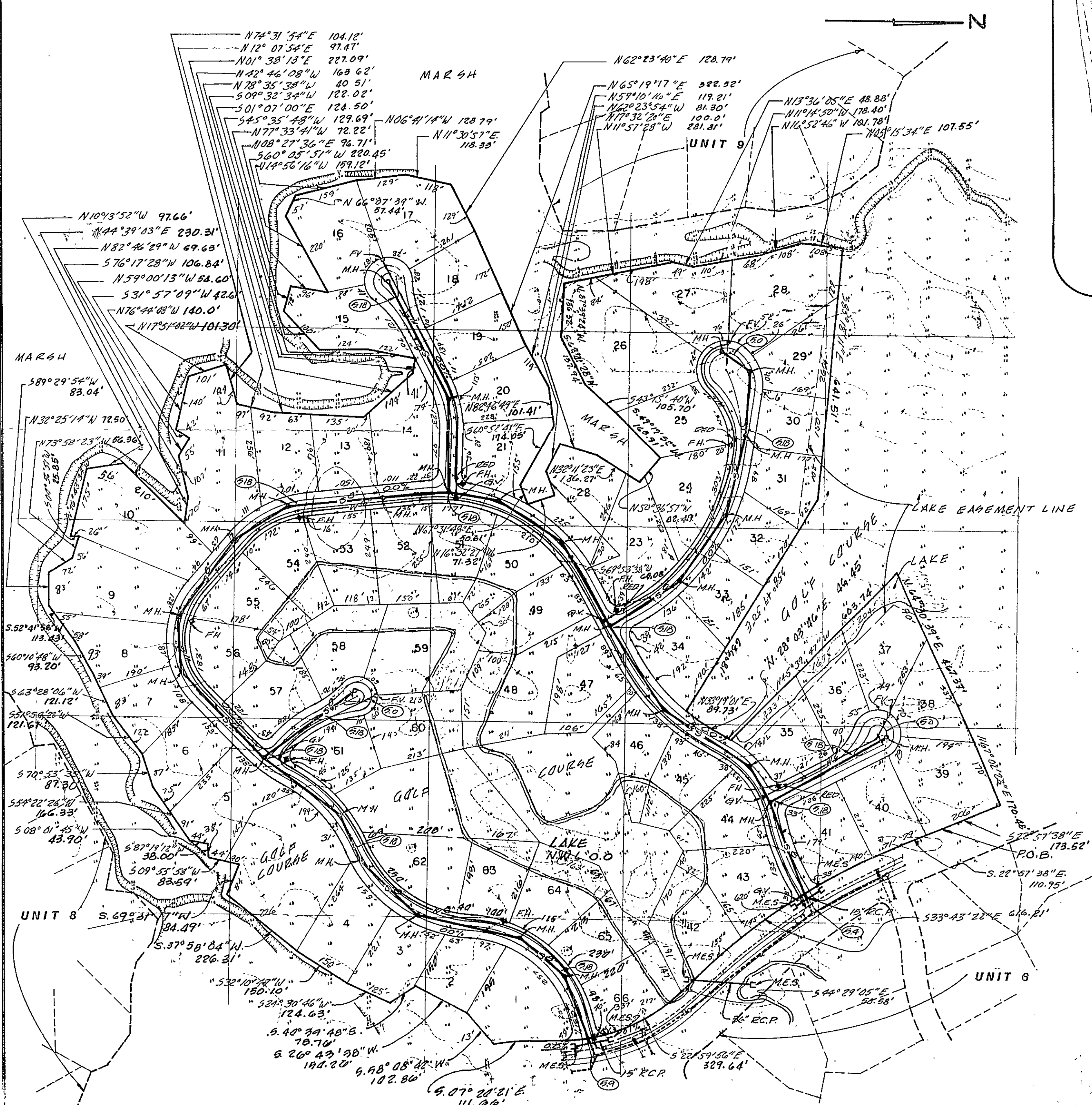
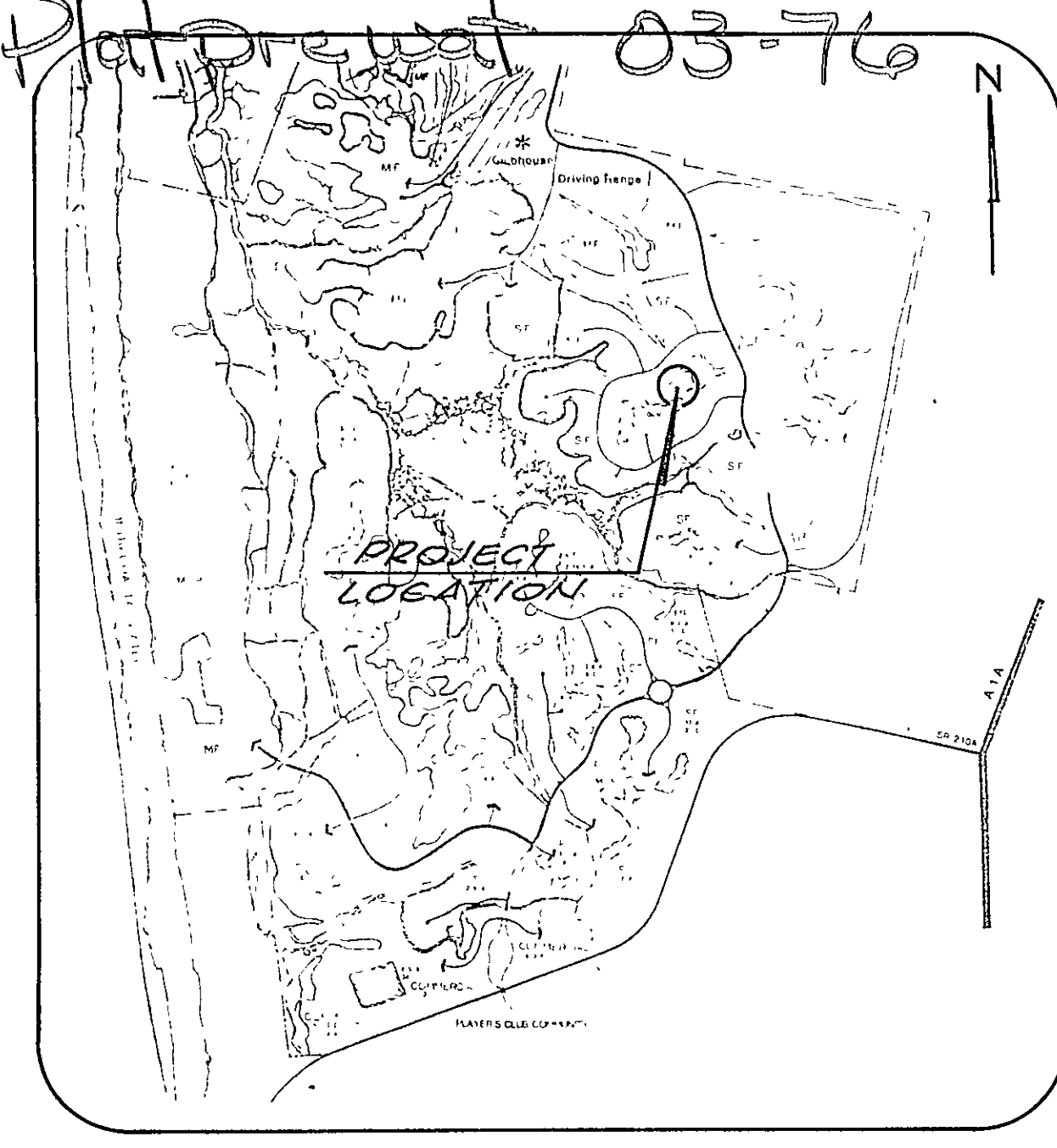


TYPICAL ROADWAY SECTION - SINGLE LANE AND CUL-DE-SACS

TYPICAL ROADWAY SECTION



VICINITY MAP

BOUNDRY AND TOPOGRAPHICAL INFORMATION PROVIDED BY H.A. DURDEN & ASSOCIATES, INC. LEGAL DESCRIPTION

MARSH LANDING AT SAWGRASS UNIT SEVEN July 5, 1984

A PART OF THE GOVERNMENT LOTS 13, SECTION 16, AND A PART OF GOVERNMENT LOT 1, SECTION 20, AND A PART OF GOVERNMENT LOTS 4 AND 5, SECTION 21, AND A PART OF THE THOMAS PITCH GRANT SECTION 40, A PART OF TOWNSHIP 3 SOUTH, RANGE 29 EAST, ST. JOHNS COUNTY, FLORIDA MORE PARTICULARLY DESCRIBED AS FOLLOWS: FOR A POINT OF REFERENCE COMMENCE AT THE SOUTHWESTERLY CORNER OF SAID SECTION 16; THENCE N.09°31'28"E. ALONG THE SOUTH LINE OF SAID SECTION 16, A DISTANCE OF 602.04 FEET TO THE POINT OF BEGINNING; THENCE S.22°57'38"E. A DISTANCE OF 110.95 FEET TO THE POINT OF CURVE OF A CURVE CONCAVE NORTHEASTERLY HAVING A RADIUS OF 1650.00 FEET; THENCE SOUTHEASTERLY ALONG THE ARC OF SAID CURVE, A CHORD BEARING OF S.33°43'22"E. AND A CHORD DISTANCE OF 616.21 FEET TO THE POINT OF TANGENCY OF SAID CURVE; THENCE S.47°29'05"E. A DISTANCE OF 50.58 FEET TO THE POINT OF CURVE OF A CURVE CONCAVE SOUTHWESTERLY HAVING A RADIUS OF 450.00 FEET; THENCE SOUTHWESTERLY ALONG THE ARC OF SAID CURVE, A CHORD BEARING OF S.22°59'56"E. AND A CHORD DISTANCE OF 329.64 FEET TO THE POINT OF TANGENCY OF SAID CURVE; THENCE S.01°30'48"E. A DISTANCE OF 76.53 FEET TO THE POINT OF CURVE OF A CURVE CONCAVE NORTHEASTERLY HAVING A RADIUS OF 550.00 FEET, THENCE SOUTHEASTERLY ALONG THE ARC OF SAID CURVE, A CHORD BEARING OF S.07°20'21"E. AND A CHORD DISTANCE OF 111.66 FEET TO A POINT; THENCE S.58°08'42"W. A DISTANCE OF 102.85 FEET; THENCE S.26°43'38"W. A DISTANCE OF 150.26 FEET; THENCE S.40°39'48"W. A DISTANCE OF 78.76 FEET; THENCE S.24°30'46"W. A DISTANCE OF 121.12 FEET; THENCE S.09°10'48"W. A DISTANCE OF 93.20 FEET; THENCE S.63°28'08"W. A DISTANCE OF 225.31 FEET; THENCE N.69°31'17"W. A DISTANCE OF 84.49 FEET; THENCE S.09°55'58"W. A DISTANCE OF 83.59 FEET; THENCE S.87°19'12"W. A DISTANCE OF 38.00 FEET; THENCE S.08°01'45"W. A DISTANCE OF 43.90 FEET; THENCE S.54°22'26"W. A DISTANCE OF 166.33 FEET; THENCE N.10°13'52"W. A DISTANCE OF 87.30 FEET; THENCE S.51°59'22"W. A DISTANCE OF 121.61 FEET; THENCE S.63°28'08"W. A DISTANCE OF 113.43 FEET; THENCE S.49°29'54"W. A DISTANCE OF 83.04 FEET; THENCE N.32°25'14"W. A DISTANCE OF 72.50 FEET; THENCE N.73°58'23"W. A DISTANCE OF 56.36 FEET; THENCE S.04°56'51"W. A DISTANCE OF 25.95 FEET; THENCE N.76°43'34"W. A DISTANCE OF 175.00 FEET; THENCE N.10°13'52"W. A DISTANCE OF 97.66 FEET; THENCE N.44°39'03"E. A DISTANCE OF 220.31 FEET; THENCE N.82°46'29"W. A DISTANCE OF 69.63 FEET; THENCE S.76°17'28"W. A DISTANCE OF 106.84 FEET; THENCE N.59°00'13"W. A DISTANCE OF 54.60 FEET; THENCE S.31°57'09"E. A DISTANCE OF 42.61 FEET; THENCE N.59°00'13"W. A DISTANCE OF 174.05 FEET; THENCE N.17°51'02"W. A DISTANCE OF 101.30 FEET; THENCE N.74°44'08"W. A DISTANCE OF 104.12 FEET; THENCE N.12°07'54"E. A DISTANCE OF 97.47 FEET; THENCE N.01°38'13"E. A DISTANCE OF 227.09 FEET; THENCE N.42°46'08"W. A DISTANCE OF 163.62 FEET; THENCE N.17°33'00"E. A DISTANCE OF 40.55 FEET; THENCE S.09°32'34"W. A DISTANCE OF 122.02 FEET; THENCE N.01°38'13"E. A DISTANCE OF 124.50 FEET; THENCE S.45°35'48"W. A DISTANCE OF 129.59 FEET; THENCE S.01°38'13"E. A DISTANCE OF 220.45 FEET; THENCE N.06°07'13"W. A DISTANCE OF 57.44 FEET; THENCE N.14°56'16"W. A DISTANCE OF 159.12 FEET; THENCE N.06°41'14"W. A DISTANCE OF 128.79 FEET; THENCE N.11°30'57"E. A DISTANCE OF 118.33 FEET; THENCE N.62°23'40"E. A DISTANCE OF 128.63 FEET; THENCE N.64°53'21"E. A DISTANCE OF 172.49 FEET; THENCE N.65°49'06"E. A DISTANCE OF 105.04 FEET; THENCE N.59°10'16"E. A DISTANCE OF 119.21 FEET; THENCE N.82°46'40"E. A DISTANCE OF 101.41 FEET; THENCE S.60°52'41"E. A DISTANCE OF 174.05 FEET; THENCE N.67°31'48"E. A DISTANCE OF 50.61 FEET; THENCE N.16°32'27"W. A DISTANCE OF 71.32 FEET; THENCE S.69°53'38"W. A DISTANCE OF 65.08 FEET; THENCE N.62°23'40"E. A DISTANCE OF 81.30 FEET; THENCE N.17°32'20"E. A DISTANCE OF 100.00 FEET; THENCE N.30°11'23"E. A DISTANCE OF 126.27 FEET; THENCE N.50°36'57"W. A DISTANCE OF 82.49 FEET; THENCE S.44°19'52"W. A DISTANCE OF 165.91 FEET; THENCE N.43°15'40"W. A DISTANCE OF 105.70 FEET; THENCE S.62°41'28"W. A DISTANCE OF 133.94 FEET; THENCE N.87°39'24"W. A DISTANCE OF 136.32 FEET; THENCE N.11°57'28"W. A DISTANCE OF 281.81 FEET; THENCE N.13°36'05"E. A DISTANCE OF 48.88 FEET; THENCE N.11°14'50"W. A DISTANCE OF 170.40 FEET; THENCE N.16°52'46"W. A DISTANCE OF 107.78 FEET; THENCE N.05°15'34"E. A DISTANCE OF 107.55 FEET; THENCE S.89°18'11"E. A DISTANCE OF 647.51 FEET; THENCE N.89°15'34"E. A DISTANCE OF 636.81 FEET TO A POINT LYING ON A CURVE CONCAVE NORTHEASTERLY HAVING A RADIUS OF 490.00 FEET; THENCE NORTHEASTERLY ALONG THE ARC OF SAID CURVE, A CHORD BEARING OF S.01°38'13"E. AND A CHORD DISTANCE OF 89.73 FEET TO THE POINT OF TANGENCY OF SAID CURVE, THENCE N.28°03'46"E. A DISTANCE OF 46.45 FEET; THENCE N.45°39'47"W. A DISTANCE OF 603.74 FEET; THENCE S.22°57'38"E. A DISTANCE OF 476.37 FEET; THENCE N.67°02'22"E. A DISTANCE OF 170.48 FEET; THENCE S.22°57'38"E. A DISTANCE OF 173.52 FEET TO THE POINT OF BEGINNING. CONTAINING 72.14 ACRES MORE OR LESS.

SCALE 1"=200'
DESIGNED BY S. JOCA/S. BORIN
DRAWN BY B. PEVY
CHECKED BY

FINAL DEVELOPMENT PLAN EXHIBIT "A" TO THE RESOLUTION

MARSH LANDING at SAWGRASS UNIT SEVEN FOR M. L. PARTNERSHIP PONTE VEDRA BEACH, FLORIDA

Bessent, Hammack & Ruckman, Inc. CONSULTING AND DESIGN ENGINEERS

DRAWING FDP-1 1 OF 1 DATE JUNE 1984 PROJECT NO. 23108-01

FDP map Plot project 2w300074